

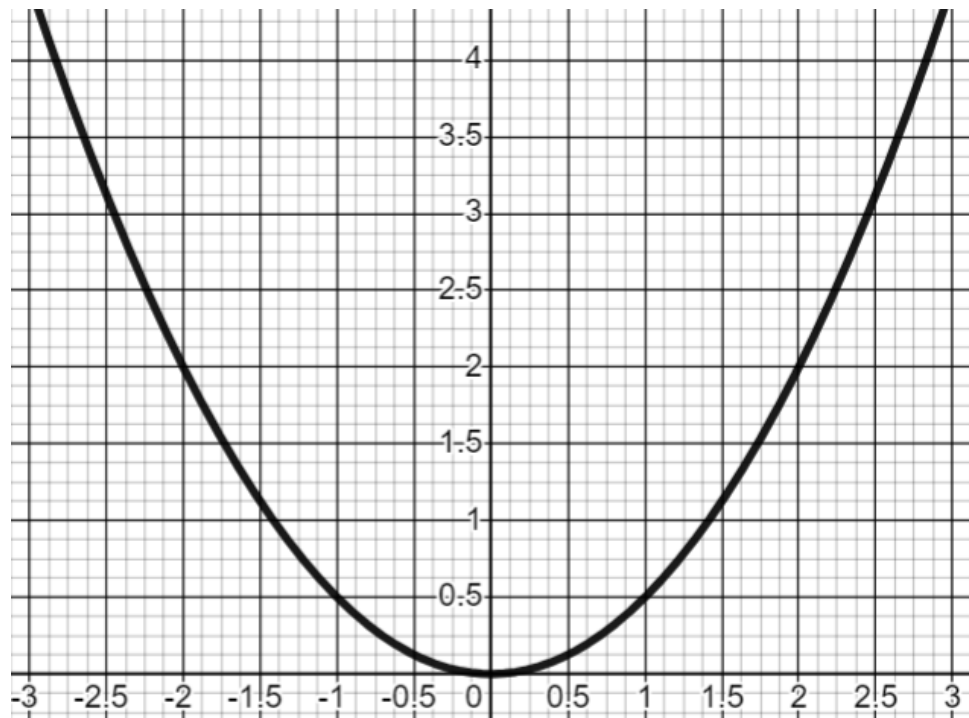
Estimating the Gradient of a Curve

(a)

Estimate the gradient of the curve at

(a) $x = 2$

(b) $x = -1$

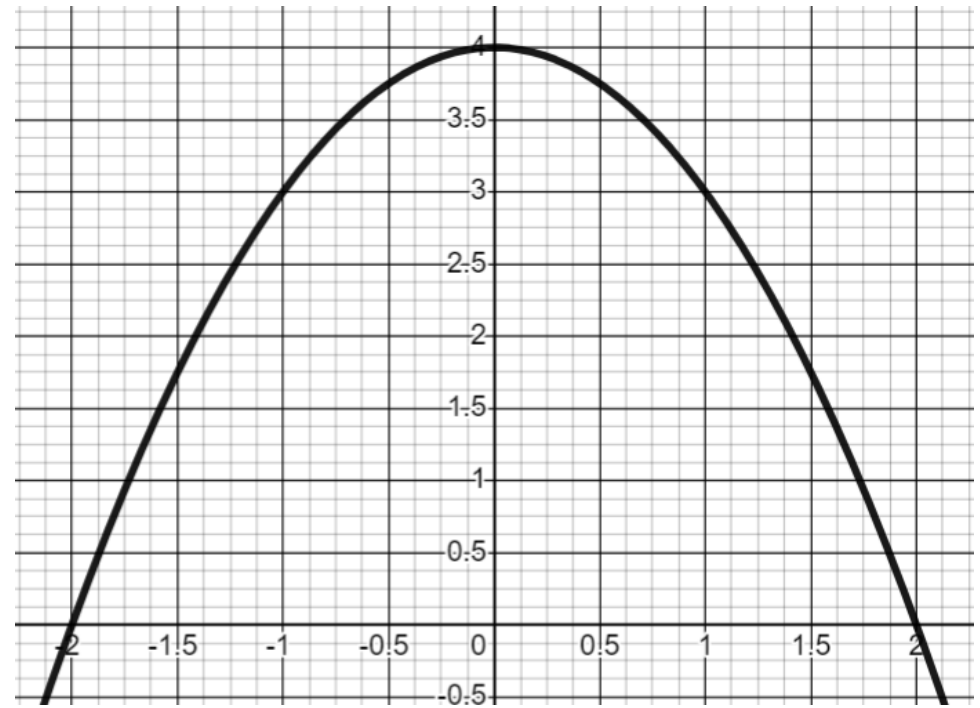


(b)

Estimate the gradient of the curve at

(a) $x = -1.5$

(b) $x = 1$

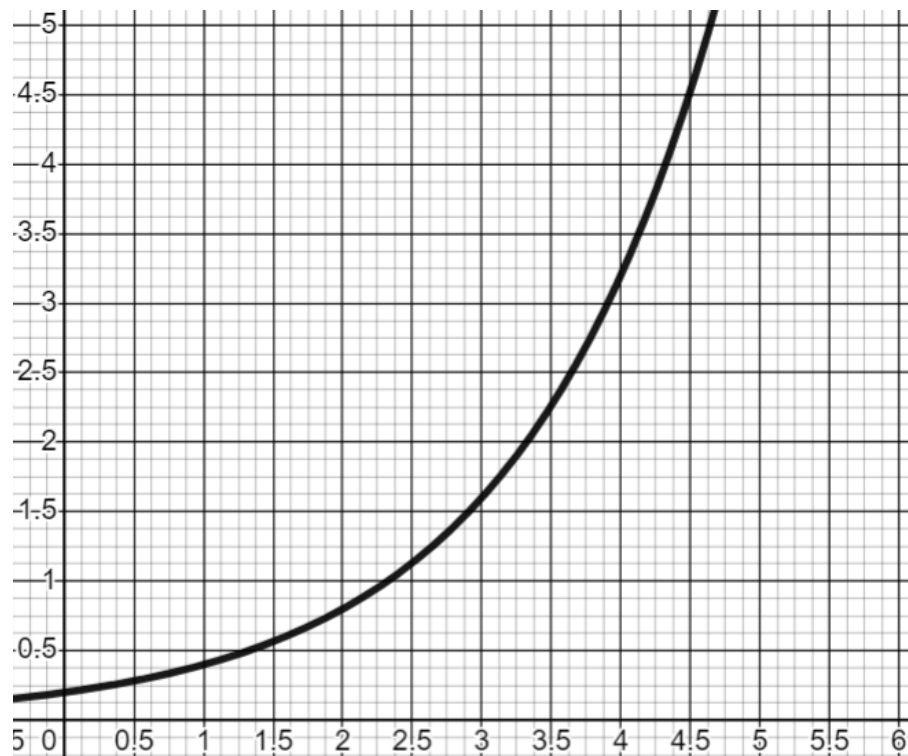


(c)

Estimate the gradient of the curve at

(a) $x = 2$

(b) $x = 4$



(d)

Estimate the gradient of the curve at

(a) $x = 2$

(b) $x = -1$

