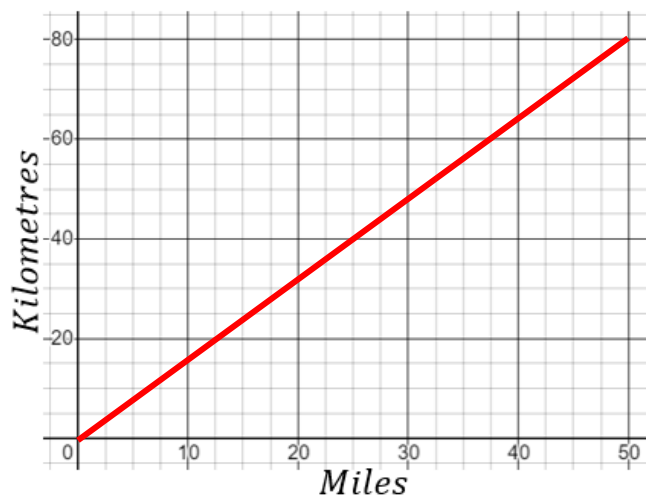


Conversion Graphs

(a)

(i) Complete the table to convert miles to kilometres, then draw a conversion graph.

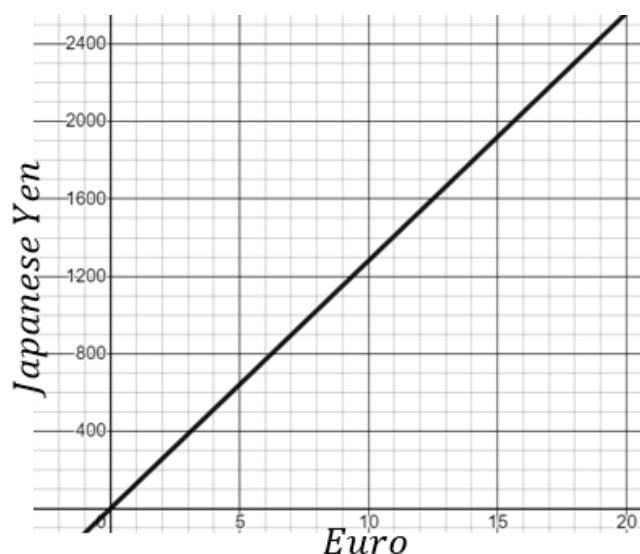
Miles	10	20	30	40	50
Kilometres	16	32	48	64	80



(ii) Use the graph to convert 55 km into miles.

(b)

The graph shown converts euros to Japanese yen.

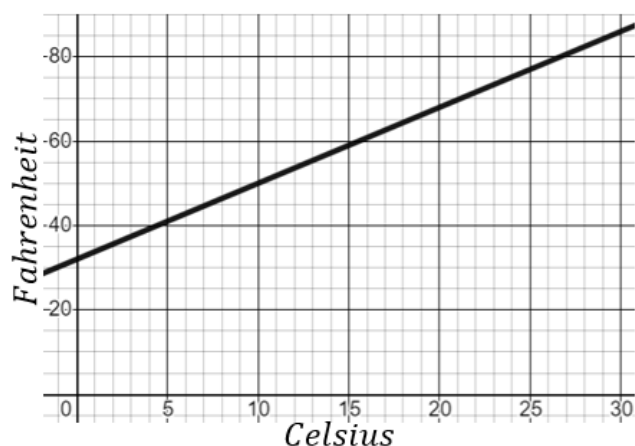


(a) Convert 10 euros to Japanese yen.
1300 Yen

(b) Convert 4000 Japanese yen into euros.
32 Euros

(c)

The graph shown converts temperatures from Fahrenheit ($^{\circ}\text{F}$) to Celsius ($^{\circ}\text{C}$).

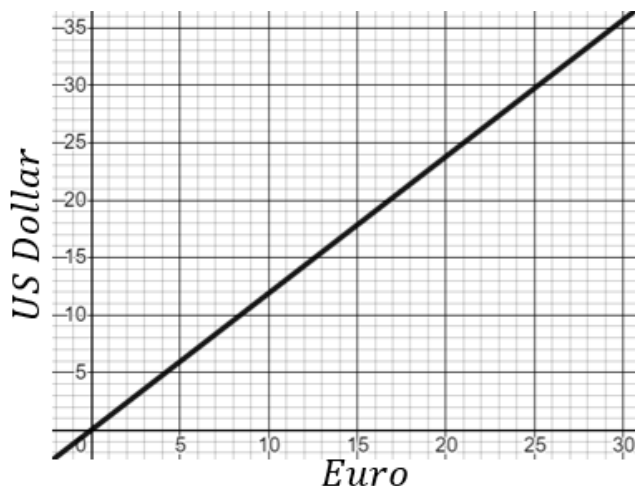


(a) Convert 10°C into $^{\circ}\text{F}$.
 50°F

(b) The temperature of a room increases by 20°F . What is the equivalent increase in $^{\circ}\text{C}$?
 11°C

(d)

The graph shown converts Euros to US dollars.



Given that 1 Euro = 10.2 Swedish krona, convert 250 US dollars into Swedish krona.

$\$250 \approx 210 \text{ Euros}$
 $210 \text{ Euros} = 2142 \text{ Swedish krona}$