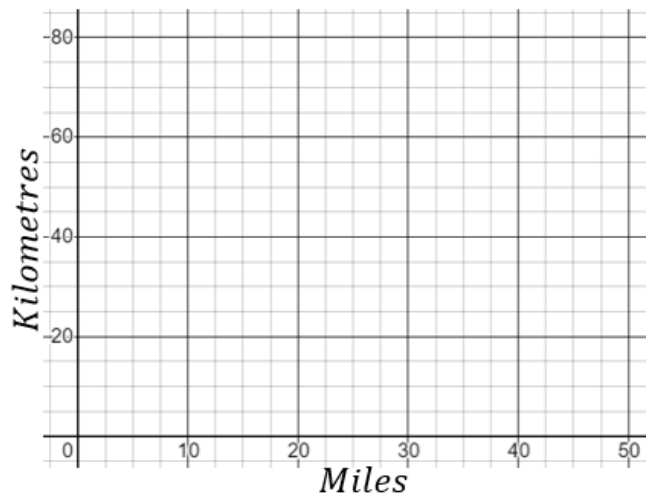


## Conversion Graphs

**(a)**

(i) Complete the table to convert miles to kilometres, then draw a conversion graph.

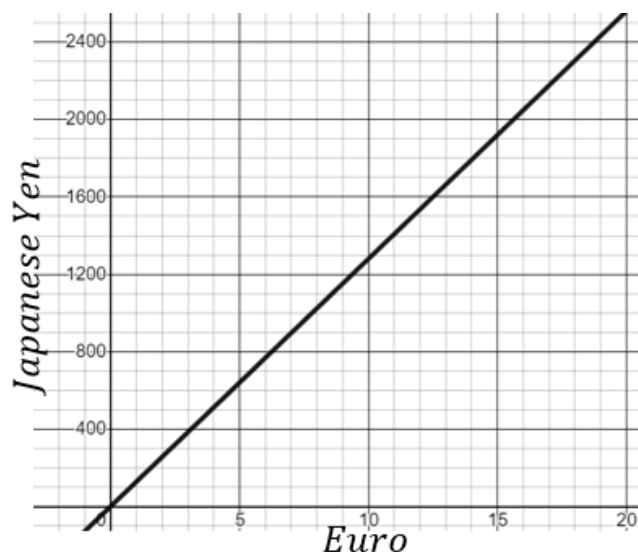
Miles	10	20	30	40	50
Kilometres	16			64	



(ii) Use the graph to convert 55 km into miles.

**(b)**

The graph shown converts euros to Japanese yen.

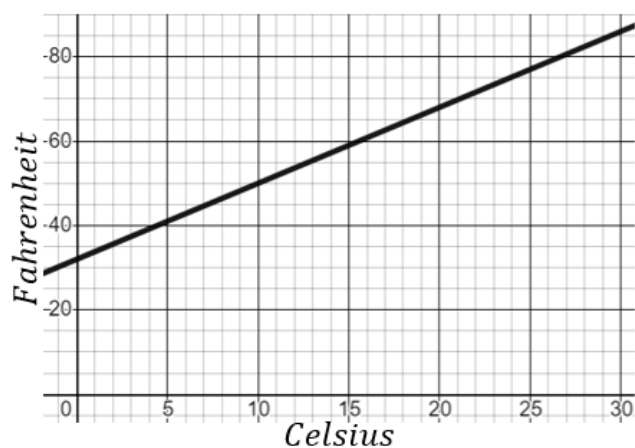


(a) Convert 10 euros to Japanese yen.

(b) Convert 400 Japanese yen into euros.

**(c)**

The graph shown converts temperatures from Fahrenheit ( $^{\circ}\text{F}$ ) to Celsius ( $^{\circ}\text{C}$ ).

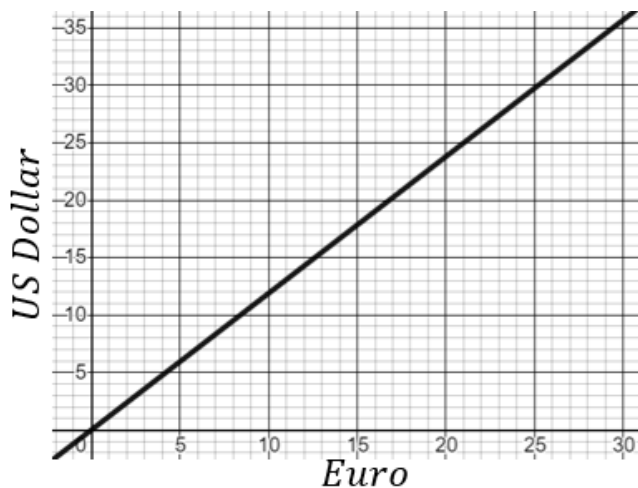


(a) Convert  $10^{\circ}\text{C}$  into  $^{\circ}\text{F}$ .

(b) The temperature of a room increases by  $20^{\circ}\text{F}$ . What is the equivalent increase in  $^{\circ}\text{C}$ ?

**(d)**

The graph shown converts Euros to US dollars.



Given that 1 Euro = 10.2 Swedish krona, convert 250 US dollars into Swedish krona.