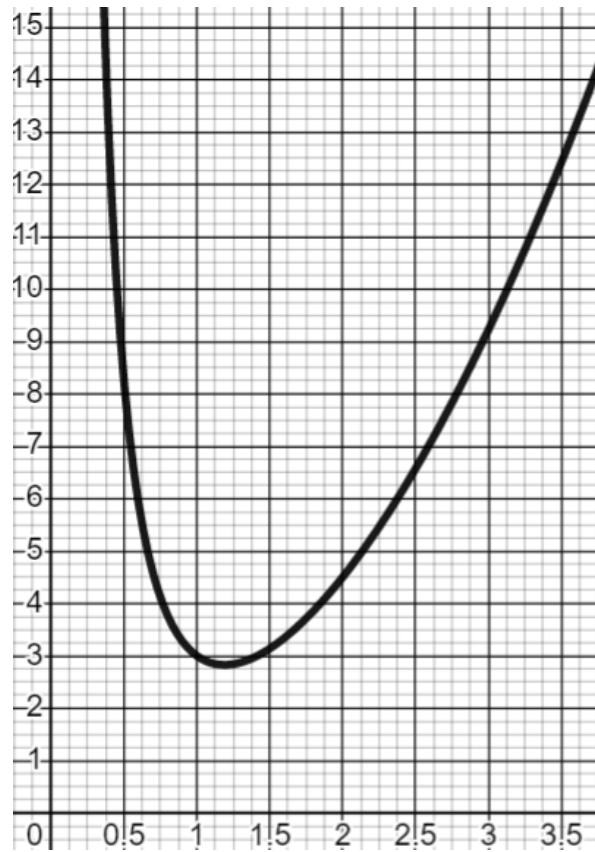


Plotting Harder Non-Linear Graphs

(a)

Plot the graph of $y = x^2 + \frac{2}{x^2}$
between $x = 0.5$ and $x = 3.5$

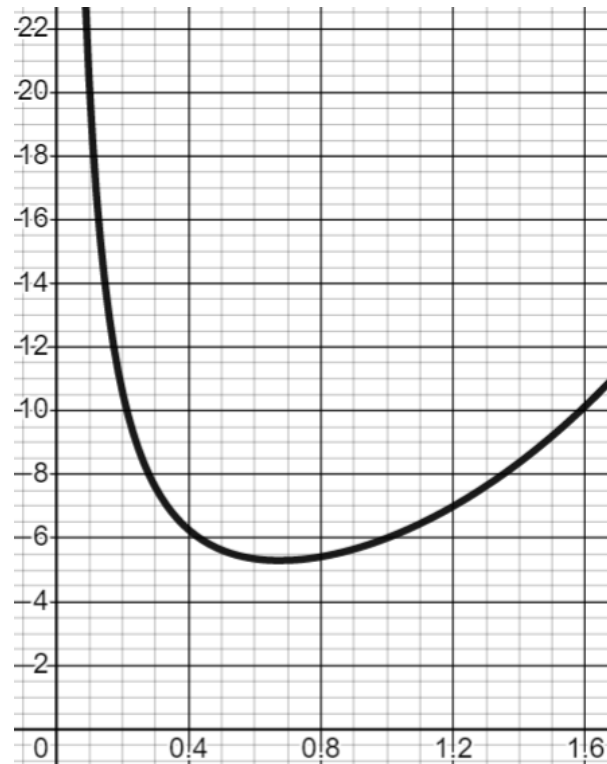
x	0.5	1	1.5	2	2.5	3	3.5
y	8.25	3	3.14	4.5	6.57	9.22	12.41



(b)

Plot the graph of $y = x^3 + 3x + \frac{2}{x}$ from
 $x = 0.1$ to $x = 1.5$

x	0.1	0.2	0.4	0.7	1	1.2	1.5
y	20.3	10.6	6.3	5.3	6	6.99	9.2



(c)

Plot the graph of $y = x \left(\frac{x}{2} - \frac{1}{x^2} \right)$
from $x = -4$ to $x = -0.5$

x	-4	-3	-2	-1	-0.5	-0.25
y	8.25	4.83	2.5	1.5	2.13	4.03

