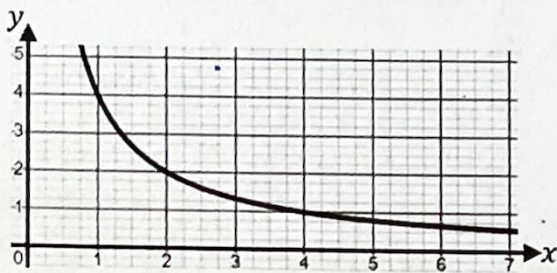


Evaluating Functions from Graphs

The graph shows the function $f(x)$.

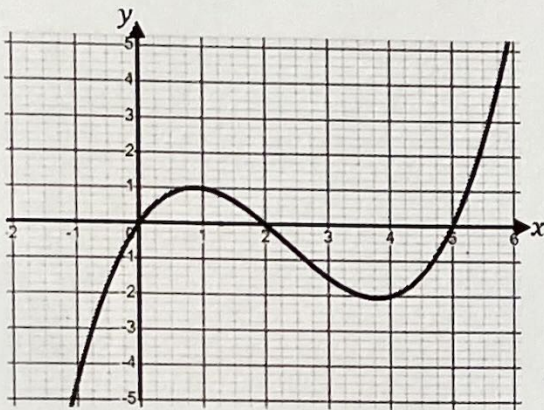


Use the graph to evaluate:

- (a) $f(1)$ (b) $f(4)$
(c) $f(2)$ (d) $f(5)$

- (a) 4
(b) 1
(c) 2
(d) 0.8

The graph shows the function $g(x)$.

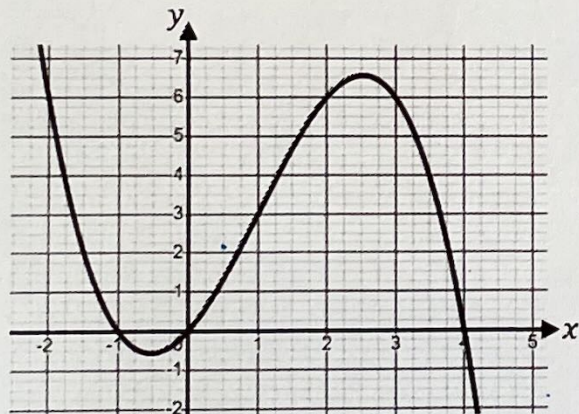


Use the graph to evaluate:

- (a) $g(1)$ (b) $g(4)$
(c) $g(5)$ (d) $g(-1)$

- (a) 1
(b) -2
(c) 0
(d) -4.5

The graph shows the function $h(x)$.



Use the graph to evaluate:

- (a) $h(1)$ (b) $h(-1)$
(c) $h(3)$ (d) $h(2.5)$

- (a) 3
(b) 0
(c) 6
(d) 6.5