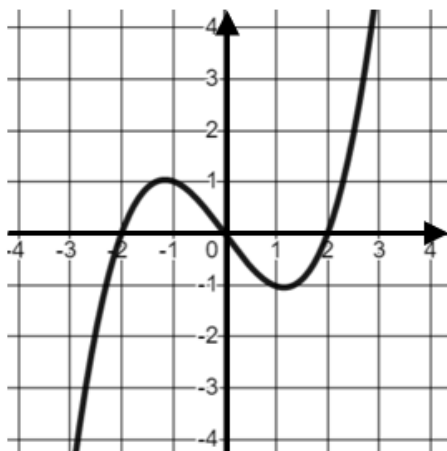


Drawing Transformations of Graphs

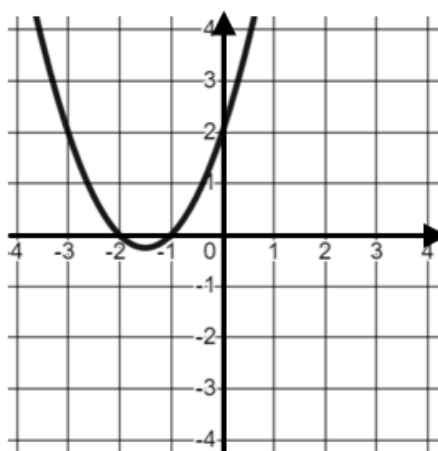
(a)

Here is a graph of $y = f(x)$. On the same axes, draw the graph of $y = f(x) - 2$.



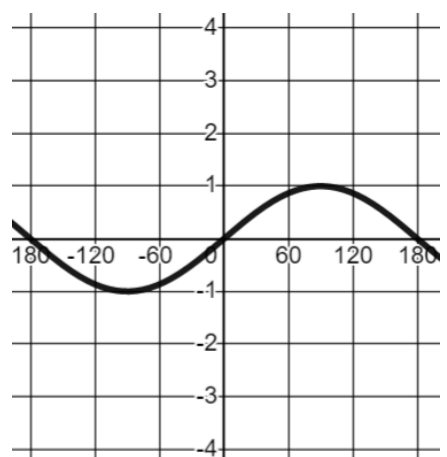
(b)

Here is a graph of $y = f(x)$. On the same axes, draw the graph of $y = -f(x)$.



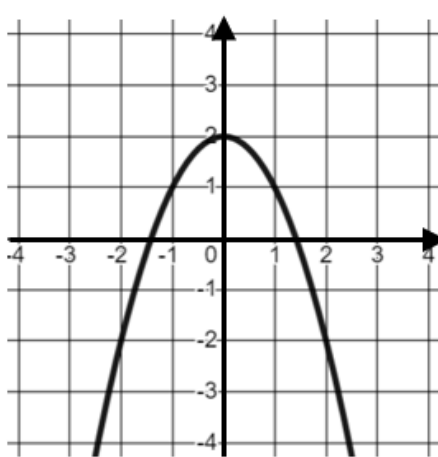
(c)

Here is a graph of $y = f(x)$. On the same axes, draw the graph of $y = 3f(x)$.



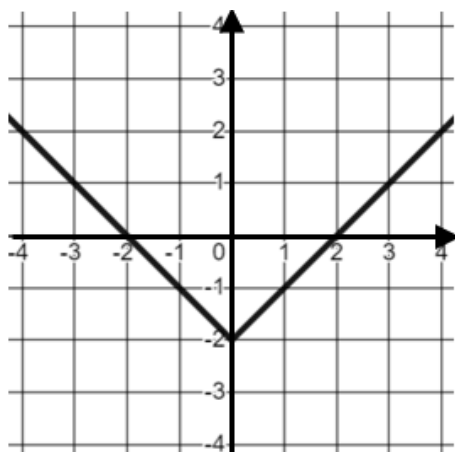
(d)

Here is a graph of $y = f(x)$. On the same axes, draw the graph of $y = f(x + 1)$.



(e)

Here is a graph of $y = f(x)$. On the same axes, draw the graph of $y = f(2x)$.



(f)

Here is a graph of $y = f(x)$. On the same axes, draw the graph of $y = 2f(x) - 1$.

