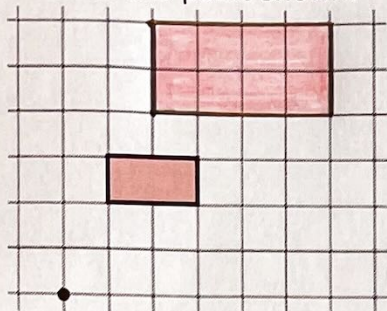


Enlarging Shapes

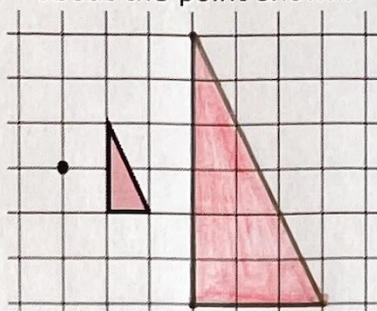
(a)

Enlarge by scale factor 2 about the point shown.



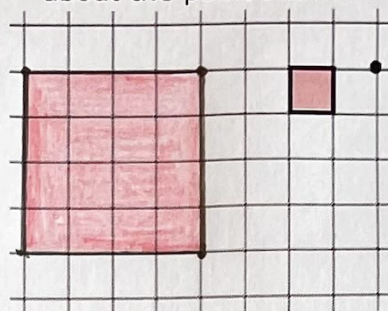
(b)

Enlarge by scale factor 3 about the point shown.



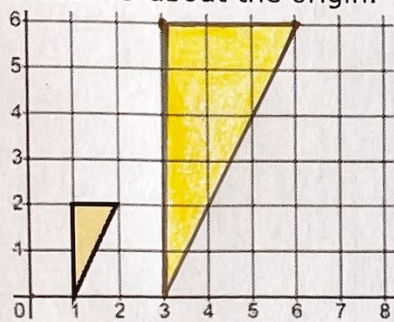
(c)

Enlarge by scale factor 4 about the point shown.



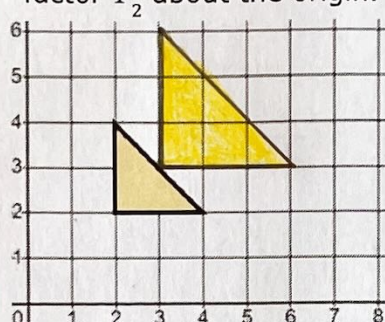
(d)

Enlarge the shape by scale factor 3 about the origin.



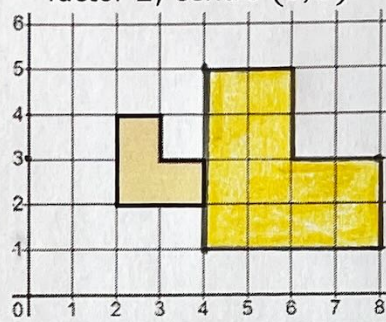
(e)

Enlarge the shape by scale factor $1\frac{1}{2}$ about the origin.



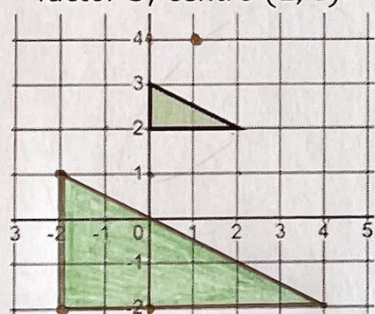
(f)

Enlarge the shape by scale factor 2, centre (0, 3).



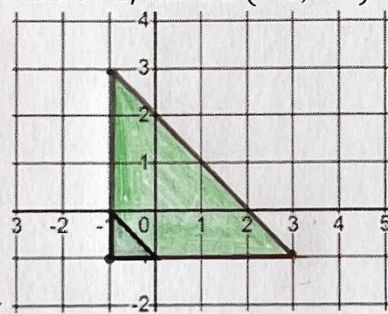
(g)

Enlarge the shape by scale factor 3, centre (1, 4).



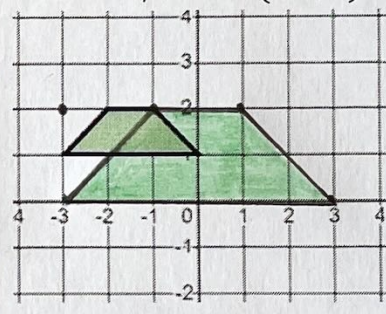
(h)

Enlarge the shape by scale factor 4, centre (-1, -1).



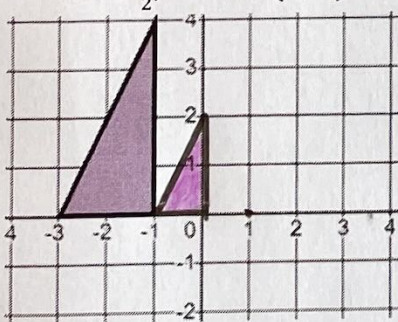
(i)

Enlarge the shape by scale factor 2, centre (-3, 2).



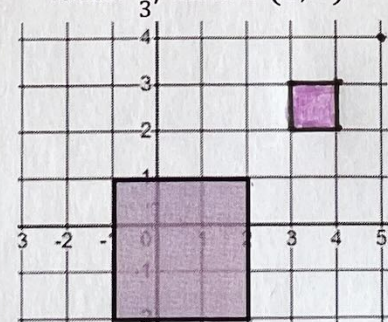
(j)

Enlarge the shape by scale factor $\frac{1}{2}$, centre (1, 0).



(k)

Enlarge the shape by scale factor $\frac{1}{3}$, centre (5, 4).



(l)

Enlarge the shape by scale factor $\frac{1}{4}$, centre (-2, 4).

