

Transformations Revision

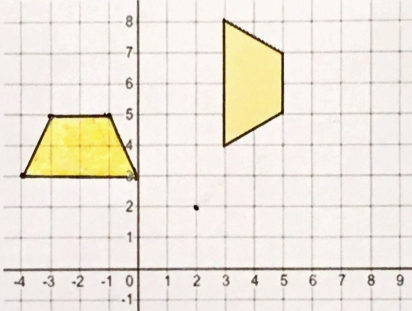
(a)

Translate the triangle by $\begin{pmatrix} 3 \\ -4 \end{pmatrix}$



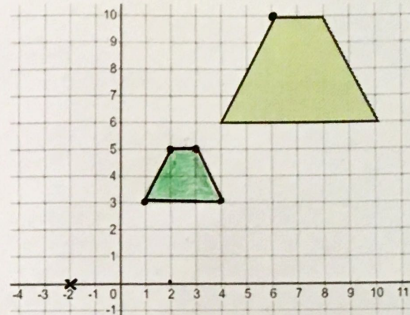
(b)

Rotate the shape 90° anti-clockwise about the point $(2, 2)$



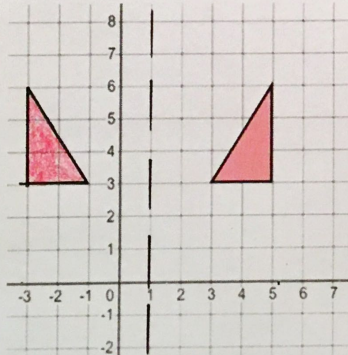
(c)

Enlarge the shape by a scale factor $\frac{1}{2}$ with centre $(-2, 0)$



(e)

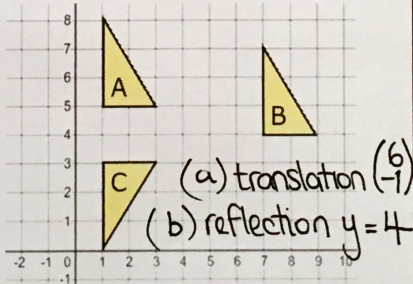
Reflect the triangle in the line $x = 1$



(f)

Describe fully the single transformation that maps:

- (a) triangle A onto triangle B
- (b) triangle A onto triangle C



(g)

Describe fully the single transformation that maps:

- (a) triangle A onto triangle B
- (b) triangle A onto triangle C

