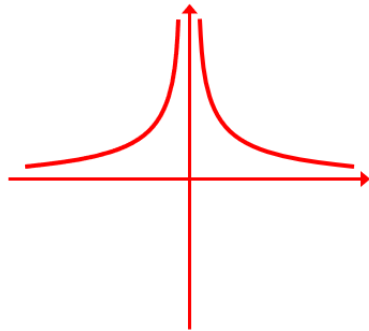


Sketching Reciprocal Graphs

(a)

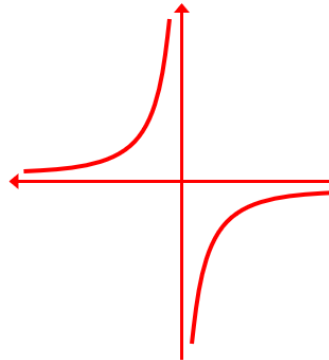
Sketch the graph of $y = \frac{1}{x^2}$ stating the equations of any asymptotes.



Asymptotes $x = 0$ and $y = 0$

(b)

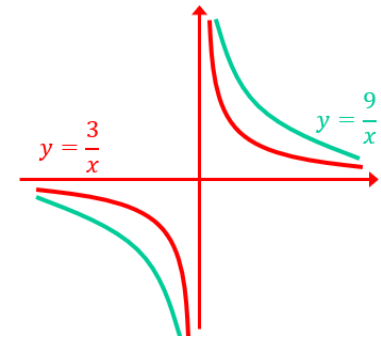
Sketch the graph of $y = -\frac{2}{x}$ stating the equations of any asymptotes.



Asymptotes $x = 0$ and $y = 0$

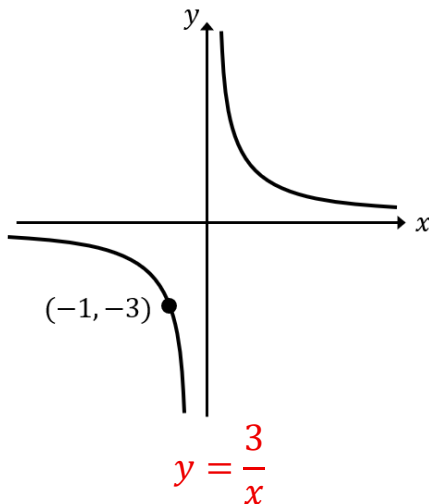
(c)

On the same axes, sketch the graphs of $y = \frac{3}{x}$ and $y = \frac{9}{x}$



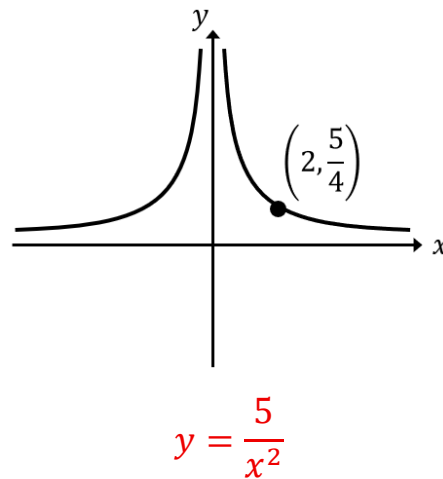
(d)

Find the equation of the graph shown.



(e)

Find the equation of the graph shown.



(f)

Find the equation of the graph shown.

